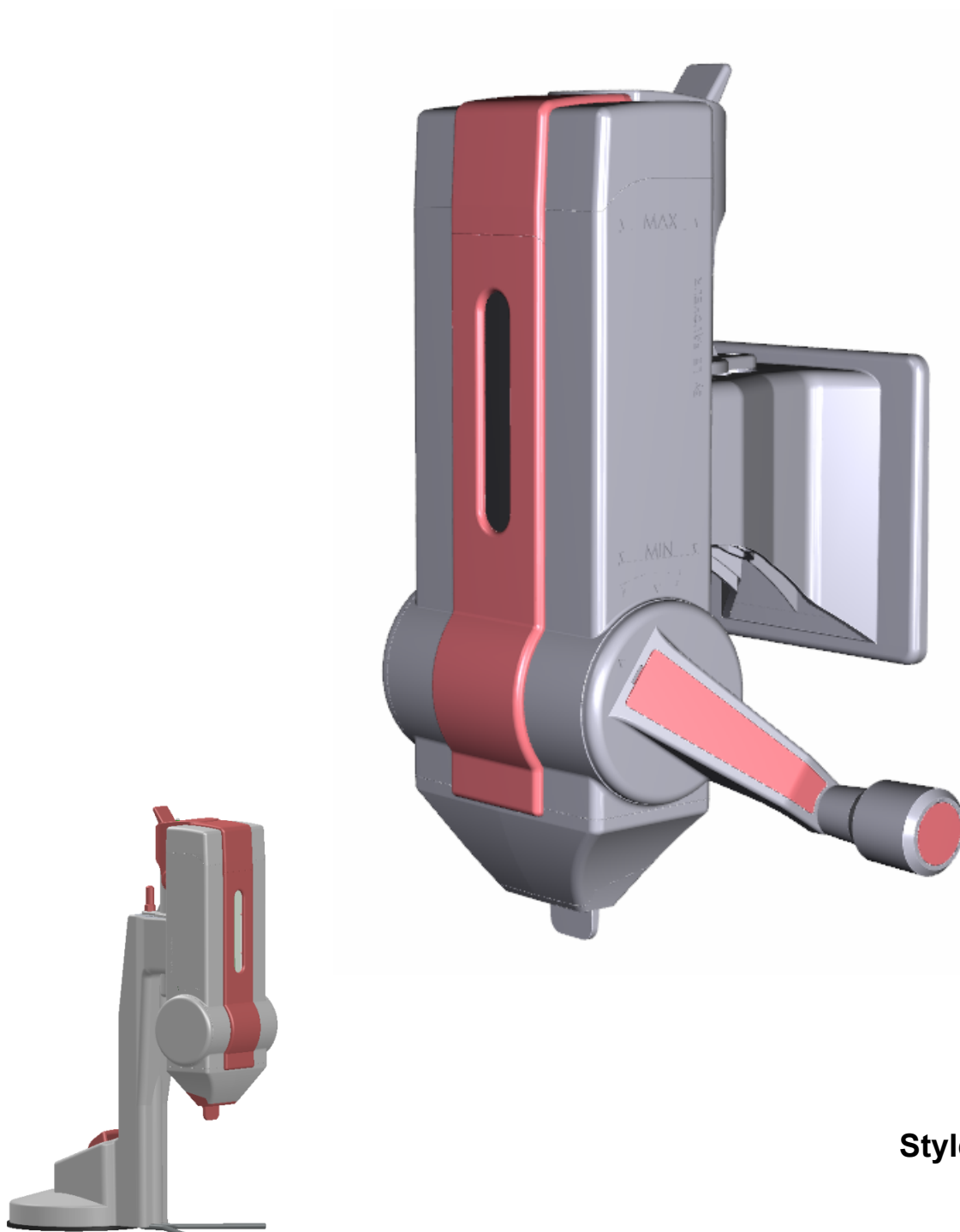


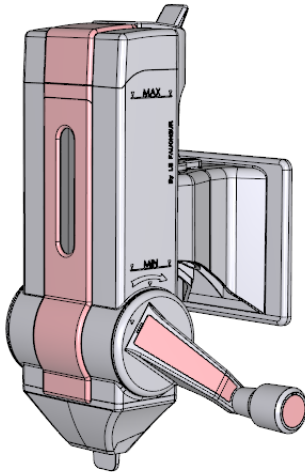
MANUAL INSTRUCTION SOAP GRINDER LA RÂPE À SAVON®





version 2.7.2

www.savon21.com



Style : RAS-GP01



	Recyclable product
	Do not let children handle the Soap Scraper®, without supervision
	A civic act to recycle the product
	Comply with the safety and standard warnings

WARNING



This handset is not a toy. Use is not recommended for **children under 7 years old** without supervision.



The soap grinder LA RÂPE À SAVON® has scraping and non-sharp blades. However, the safety trigger must remain closed after each use. Do not insert your fingers into the cutting drum.

USAGE LIMIT



The soap grinder, LA RÂPE À SAVON®, was specially designed **to work only with soaps provided on our website www.savon21.com** and with soaps (certified according to the use of our product) from our accredited partners. Using soaps not certified by LA RÂPE À SAVON® implies the loss of guarantee of the product.



Soft and/or sticky soaps, should not be used by any way, because they soot the blades and cover the drainage holes. Besides, they are not adaptable to the soap grinder LA RÂPE À SAVON®.



This handset is not to water proof. Keep it away from wet places (showers, steam room, etc.).

SOAP RECHARGES

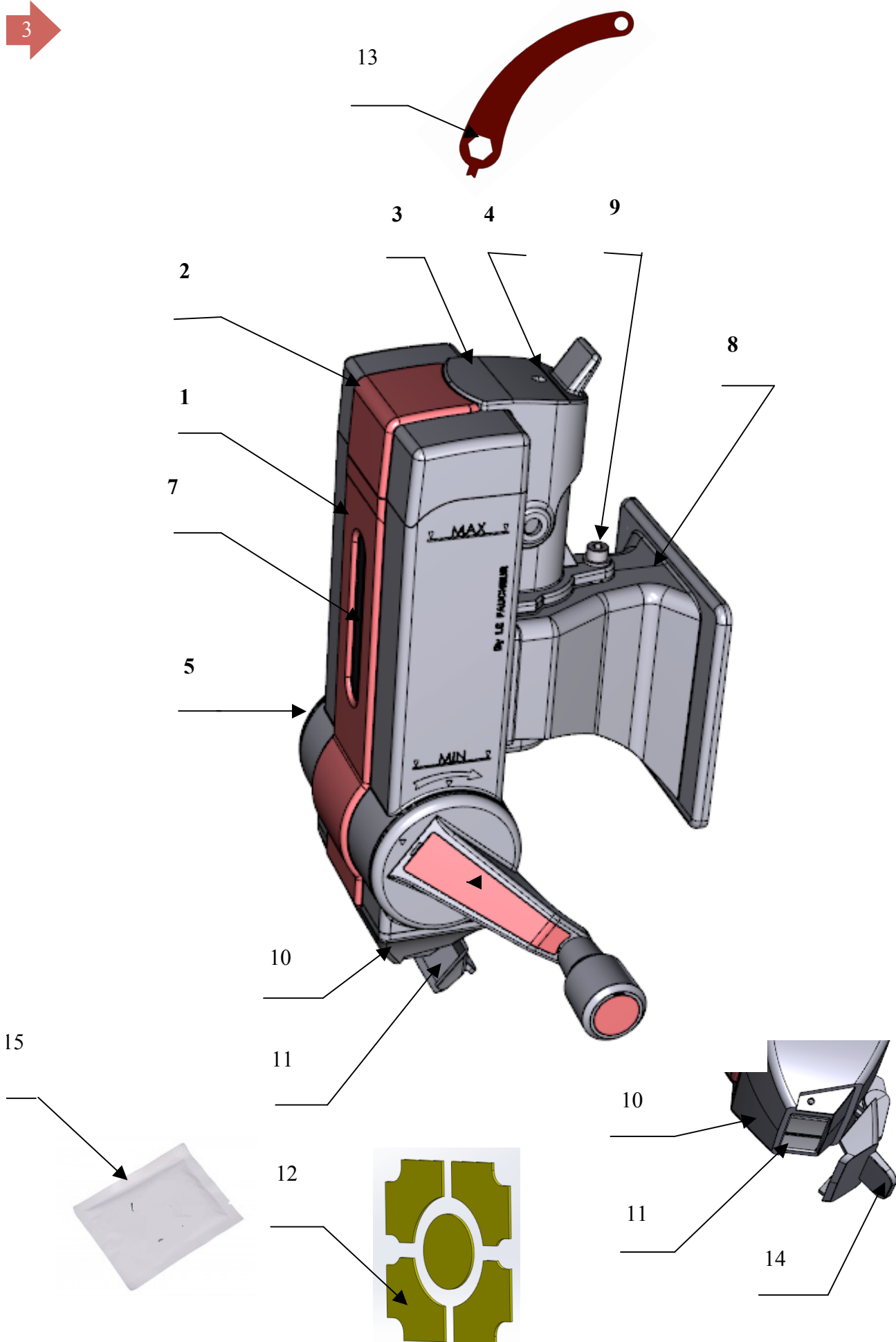
Find your soap refills at our website: www.savon21.com or from our accredited partners.

SOAP CONSERVATION



To prevent soap softening, which will lead to soap grinder dysfunction, soaps should be stored away from light and in a dry place at about 20° Celsius degrees. In addition, a humidity level of less than 40% must be observed for optimal operation with the soap grinder LA RÂPE À SAVON®.

3



1-DESCRIPTION

1- Body	9- Locking screw
2 - Cover	10- Scraper spout
3 – Closure	11- Scraped soap outlet
4 – Lock closure release hole (option)	12- Double-sided adhesive tape
5- Left side	13- Security key (option)
6- Hand crank	14- Latch cover
7- Level window	15- Cleaning wipe
8- Soap scrape holder	

2-CARACTERÍSTICAS

Scrapes dimension:	Lg 126 mm x H 221 mm x P 90 mm Weight: 400 g
Machine dimension:	Lg 126 mm x H 221 mm x P 118 mm Weight: 480 g
Machine dimension with support:	Lg 143 mm x H 309 mm x P 132 mm- Weight: 660 g
Maximum soap size with groove:	Lg 60 mm x thickness 26 mm x H 85 mm
Maximum soap size without groove:	Lg 60 mm x thickness 20 mm x H 85 mm

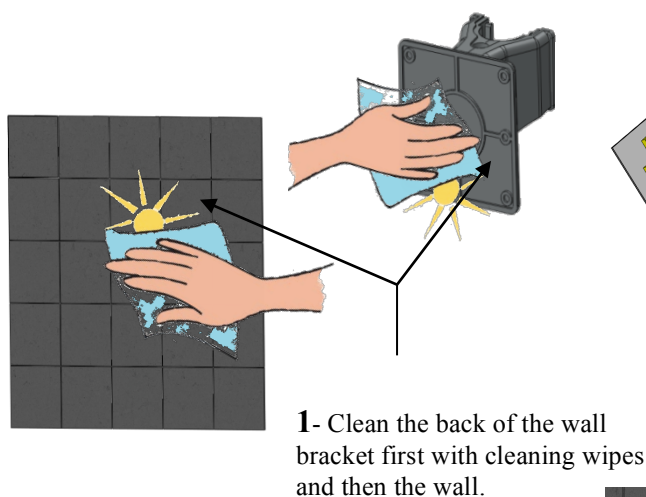
3- LA RÂPE À SAVON® INSTALLATION



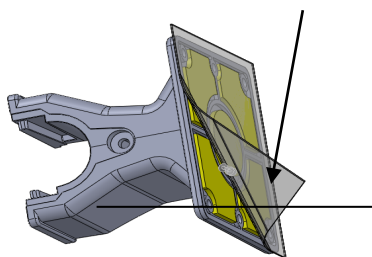
Do not install LA RÂPE À SAVON® in a wet place (showers, steam room, etc.), as it affects the right operation of the machine.



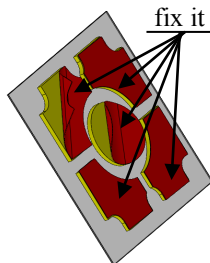
Depending on the quality of your wall covering, the double-sided tape system may not be effective. In this case, we recommend fixing the wall bracket with fixing screws (screws not supplied).



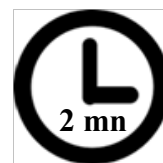
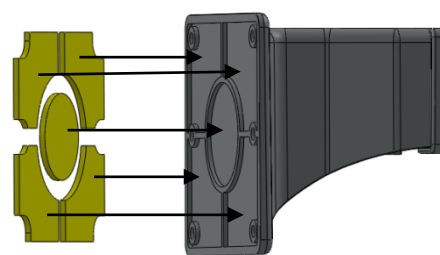
4- Remove the 2nd protection from double-sided tape



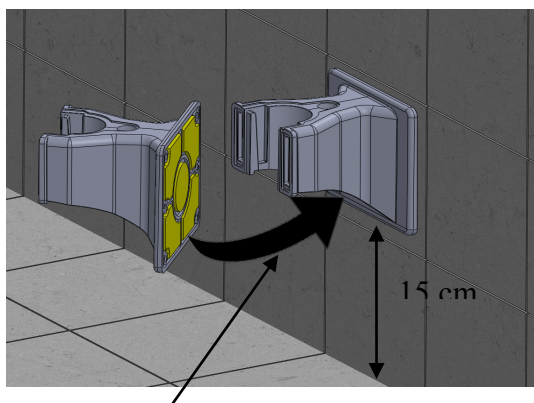
2- Remove the first protection from the double-sided tape and fix it at the back of the support.



3- Stick it to the back of the support.



Wait 2 mn before installing LA RÂPE À SAVON®



5- Before installing the scraper, glue the holder horizontally in the wall by forcing and wait 2 mn for drying.

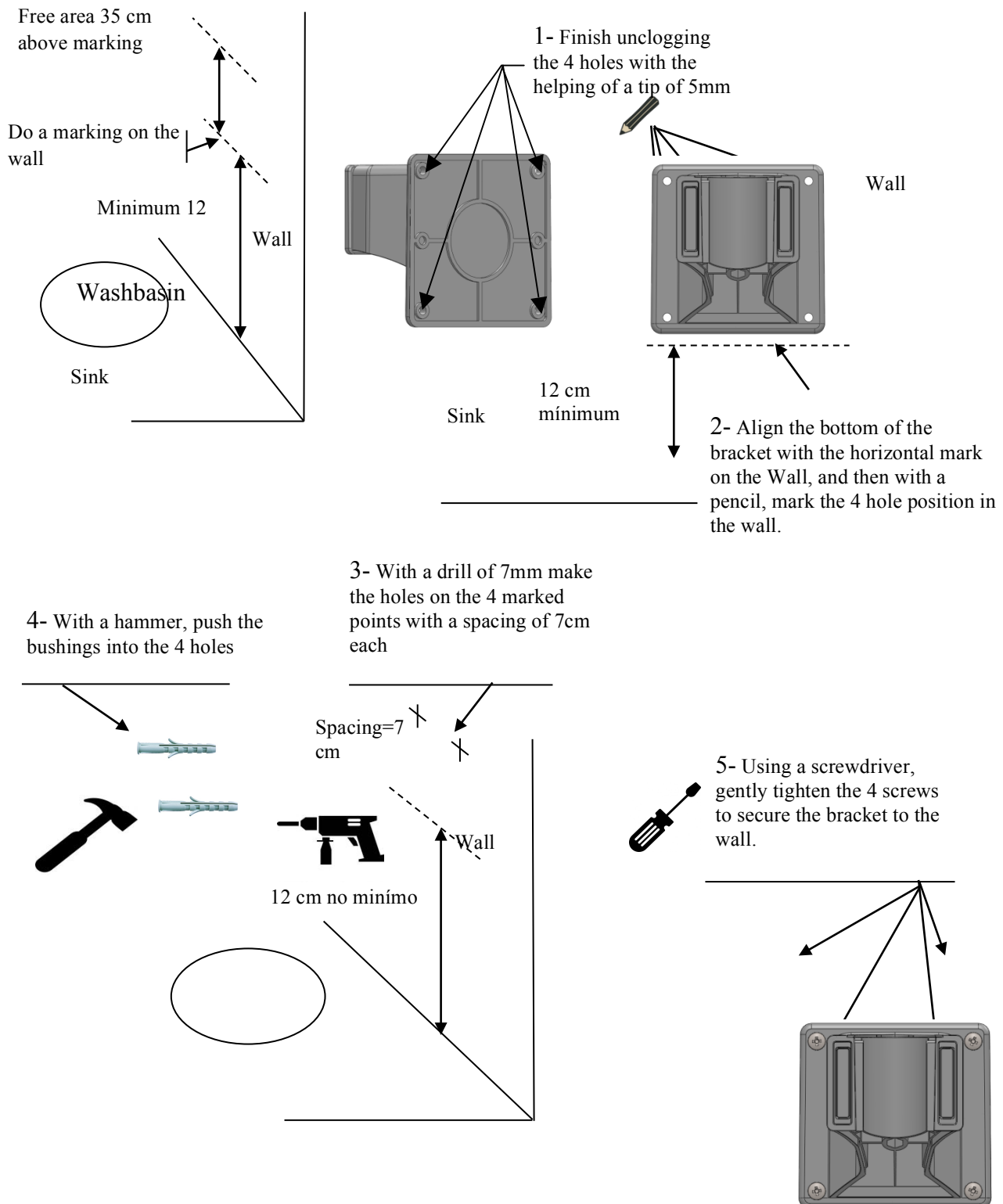
3.2 FIXING TO THE WALL WITH SCREWS



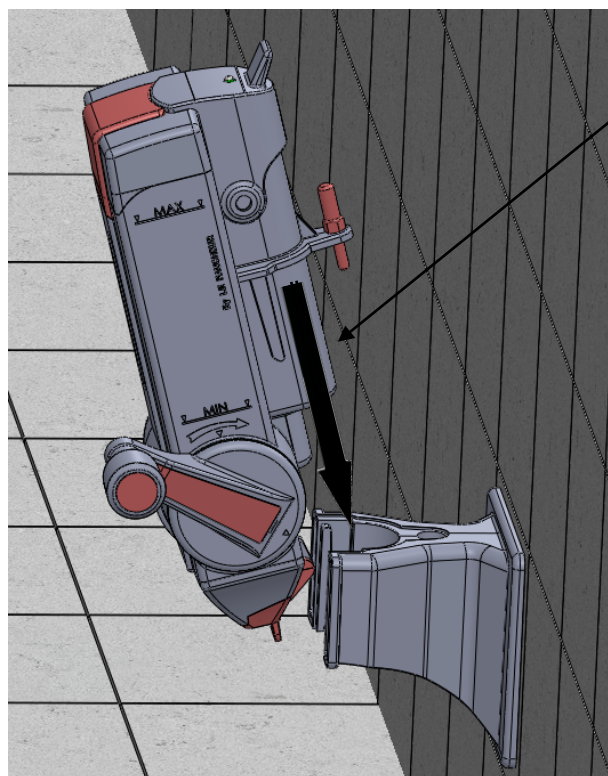
Do not install LA RÂPE À SAVON® in a wet place (shower, steam room, etc) as it affects the right operation of the machine.



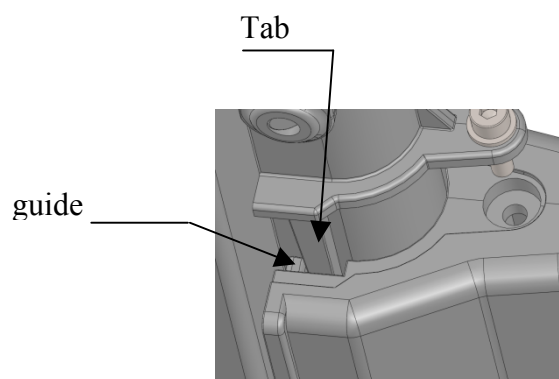
Depending on the quality of your wall covering, the double-sided tape system may not be effective. In this case, we recommend fixing the wall bracket with fixing screws (screws not supplied).



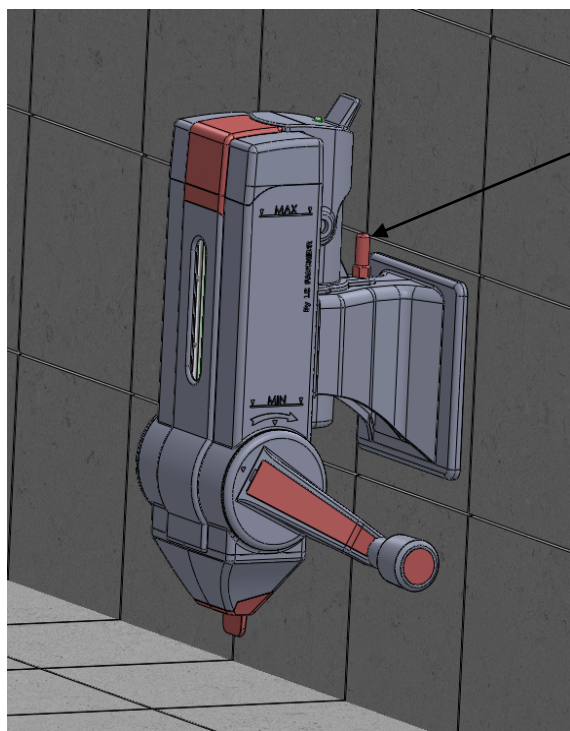
4.1-PLACING SOAP GRINDER IN THE SUPPORT ON THE WALL



6- Slope the grinder 15 degrees before insert into the support.

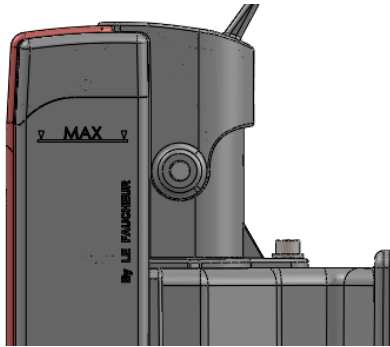


7- Sloped scraper to 15 degrees: insert into the soap grinder grooves and press firmly. Tighten the screw by hand or with a screwdriver (option).



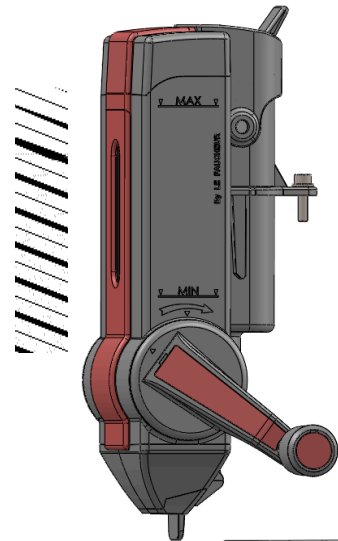
8- Tighten the screw by hand or with a screwdriver.
The soap grinder LA RÂPE À SAVON® is installed.

4.2 REMOVE THE SOAP GRINDER FROM ITS SUPPORT



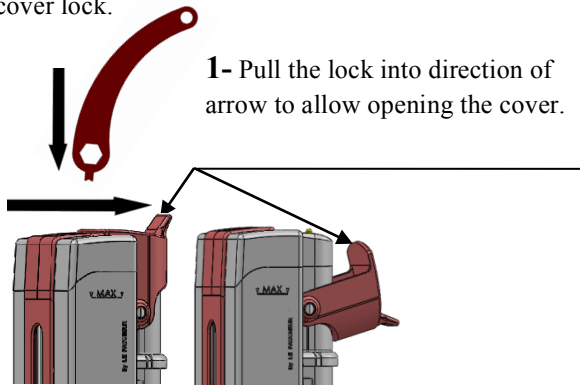
1- Unscrew cover screw completely by hand or with a screwdriver (option).

2- Pull the grinder upward, 15 degrees



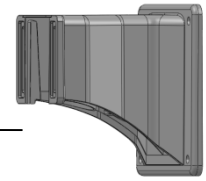
5-INSERT SOAP

Option: Unscrew the top by inserting the tip of the wrench into the hole (4) of the cover lock.

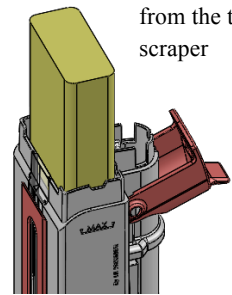


1- Pull the lock into direction of arrow to allow opening the cover.

2- Remove the cover by pulling up

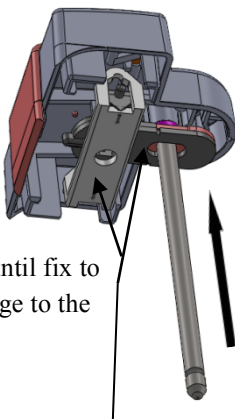


3- Insert the soap from the top of the scraper

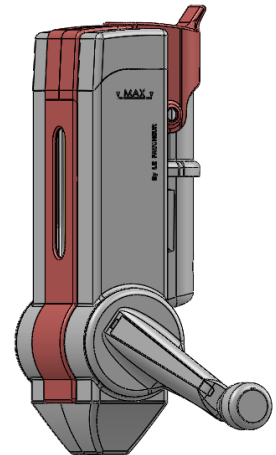
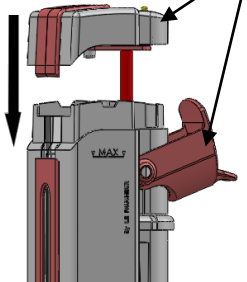


6- The soap grinder is ready to use.

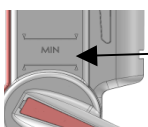
4- Raise de handle until fix to the magnet and engage to the top of the support.



5- Lock the grinder with key



When be at minimum, insert a new soap



When soap be at MIN level, *you have 2 options:*

A- Put a new soap at the grinder without removing the remaining piece of soap. In this case, during the transition from one to another soap, some bits of soap can come out of the holes because of the cutting technology used by LA RÂPE À SAVON®.

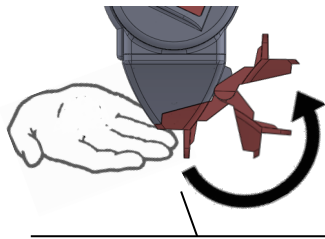
B- Remove the remaining piece of soap and to put a new one to avoit the appearance of bits of soap.

5-GET BRUSHES OF SOAP

5.1-USE THE GRINDER WITH BOTH HANDS

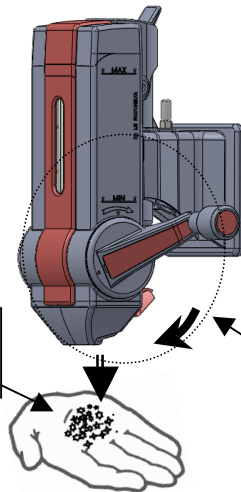


Turn the crank in the direction of the arrow (clockwise) to get the brushes of soap.



1- Open the flap by pushing it back to its highest position.

2- Put your hand under the hole of grinder to get the scrapes.



3- Always give the crank in the same direction.



4- Wet the other hand, and then, rub both to foam. Then pass your hands through water.

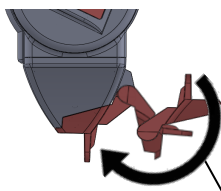


When changing from the old to the new soap, small bits of soap can come out instead of the usual splinters. This is normal due to the technology used by LA RÂPE À SAVON® (see Chapter 5 section A and B)

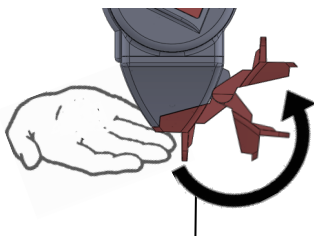
5.2-USE THE GRINDER WITH ONE HAND



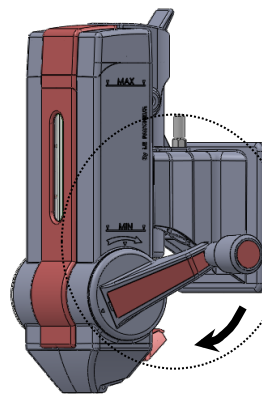
Turn the crank in the direction of the arrow (clockwise) to get the flakes of soap.



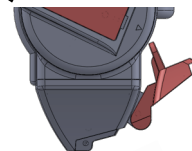
1- Close the tab by pulling it forward to the closed position.



3- Open the tab, push it up and fingers together.



2- Always turn the crank in the same direction, closed tab, to accumulate the soap chips inside the grinder nozzle



4- When the tab opens, the soap scrapes will fall into your hand.

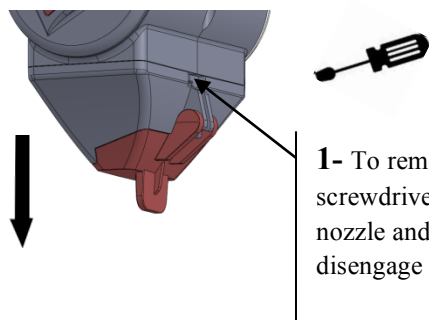


When changing from the old to the new soap, small bits can come out instead of the usual scrapes. This is normal due to the technology used by LA RÂPE À SAVON® (see Chapter 5 section A and B).

6-MAINTENANCE OF SOAP GRINDER, LA RÂPE À SAVON®

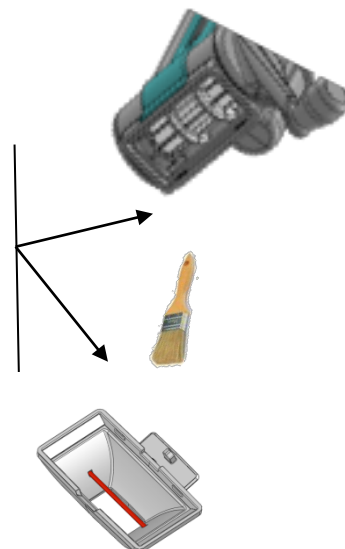
When using LA RÂPE À SAVON®, the machine can, eventually, clog, does not scrape or scrape lightly. To unclog the grinder, tap gently with your hand on the nozzle to drop the soap built into the grinder or, remove the nozzle and clean it with a brush.

Clean the cutting blades by removing the accumulated soap.



1- To remove the nozzle, insert a screwdriver into the slot behind the nozzle and give it a quarter turn to disengage it.

2- Clean the lower part and the nozzle of the grinder with a brush as well as the cutting blades.



7-BASIS INSTALLATION (Option)

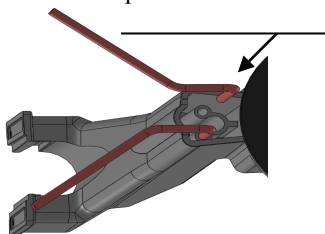


Suction cup systems are non-permanent fasteners. Therefore, it is recommended to check that the suction cup adheres well to the surface and, if necessary, to re-attach again.

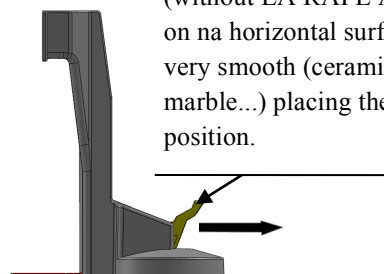


For optimum attachment, the surfaces that will receive the suction cup must have the same characteristics as the glass surface (smooth, clean and low roughness).

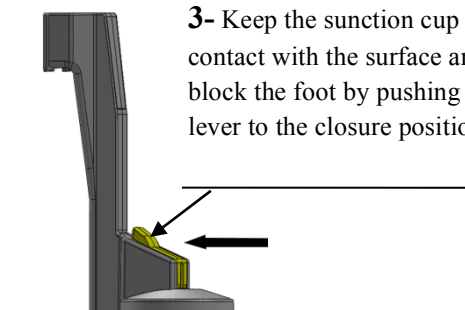
1- Install the right and left anti-tippers by pushing firmly into the respective holes.



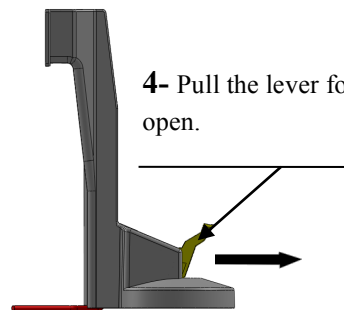
2- Put the suction cup base (without LA RÂPE À SAVON®) on a horizontal surface, flat, clean, very smooth (ceramic, glass, marble...) placing the lever in open position.



3- Keep the suction cup in contact with the surface and block the foot by pushing the lever to the closure position.



4- Pull the lever forward to open.



8. ADVANCED FUNCTIONS

8.1 ADJUSTMENT OF THE QUANTITY OF SOAP CHIPS



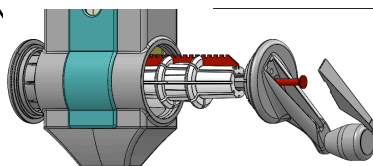
The blade is not very sharp. However, whenever you handle it, do so carefully.



The disassembly and assembly of the pulleys to regulate the amount of soap must be carried out with great care, as a poor handling of the screw deteriorates the thread and the assembly becomes impossible. Maximum number of disassemblies: 3

3- Remove the pulleys

1- Remove the crank cover with small screwdriver and, unscrew the bolt.



2- Remove the crank and drum by keeping the blades in the grooves.

4.2- Regulation of the amount of scraped flakes

Left hand crank

Position of the 2 blades:

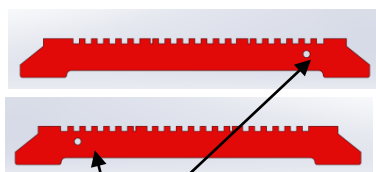
- 0-1G - low quantity
- 1G-2G - average quantity
- 2G-3D - normal quantity
- 3G-4 - maximum quantity

4.1- Regulation of the amount of scraped flakes

Right hand crank (fabric default)

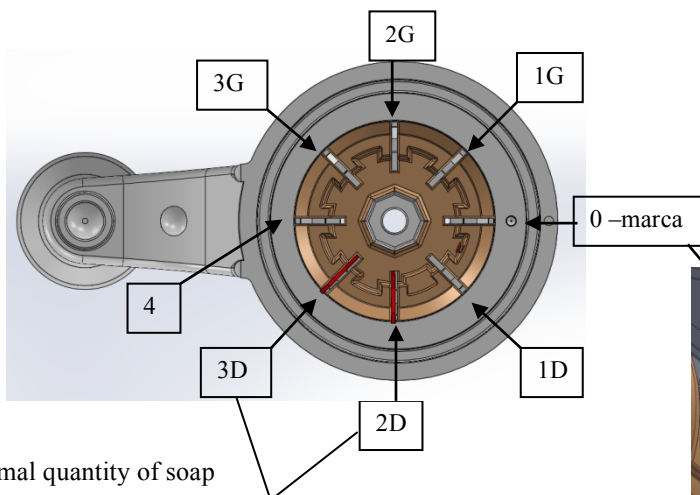
Position of the 2 blades:

- 0-1D - low quantity
- 1D-2D - average quantity
- 2D-3D - normal quantity
- 3D - maximum quantity

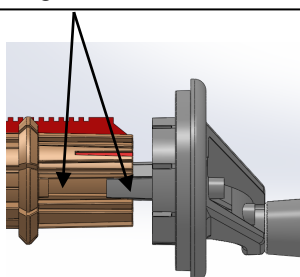


4.3- Warning! The blades should be placed in quincunx on the drum (see mark)

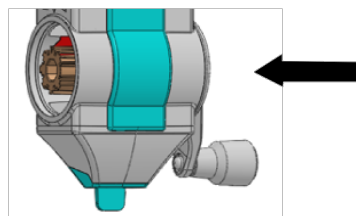
Example on the picture:
Blades in 2D-3D = Normal quantity of soap

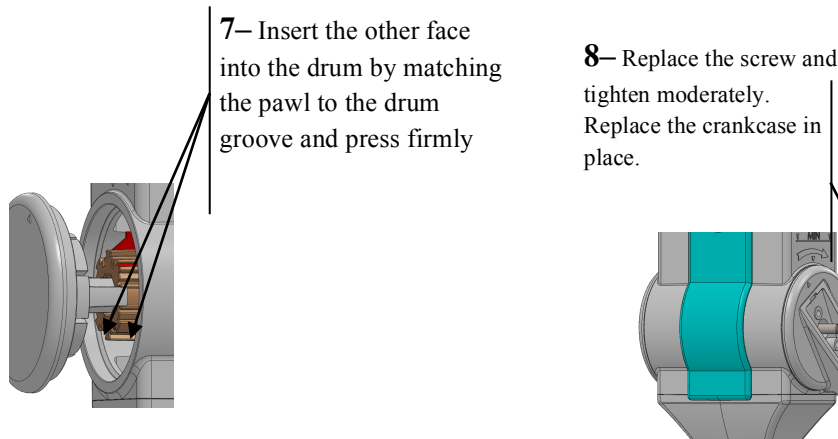


5- Replace the drum on the crankshaft carefully and by matching the groove with the fitting.



6- Thoroughly, insert the face of the crank and the drum with the blades into the right bore of the machine.





The disassembly and assembly of the side face to regulate the soap amount must be carried out with great care as an unsuitable tightening of the screw deteriorates the side face of thread and the assembly becomes impossible. Maximum numbers of disassemblies: 3

8.2 CONFIGURATION OF THE SOAP GRINDER FOR LEFT HANDED



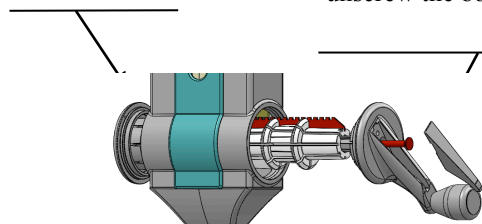
The blade is non-cutting. However, you must handle it carefully.



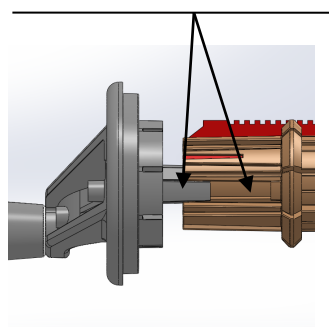
The disassembly and assembly of the lateral faces to regulate the soap amount must be carried out carefully as an unsuitable tightening of the screw deteriorates the side face thread and the assembly becomes impossible. Maximum numbers of disassemblies: 3

3— Remove the left pulley.

1— Remove the crankcase with a small screwdriver and unscrew the bolt.

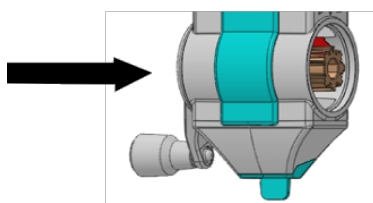


4— Replace the handle carefully by matching with the pawl.

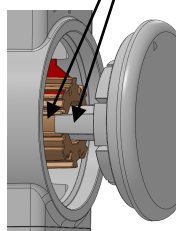


5— Insert the side face of the crank and the drum and the blades on the left hole of the machine.

2— Remove the handle and leave the drum and blades in place.



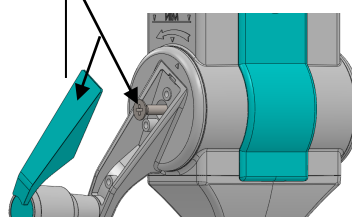
6— Insert the side face by matching the pawl with the drum groove and push firmly.



7— Replace the screw and tighten moderately. Replace the crankcase.



The disassembly and assembly of the lateral faces must be carried out very carefully because a bad tightening of the screw deteriorates the thread and the assembly becomes impossible. Maximum numbers of assemblies: 3

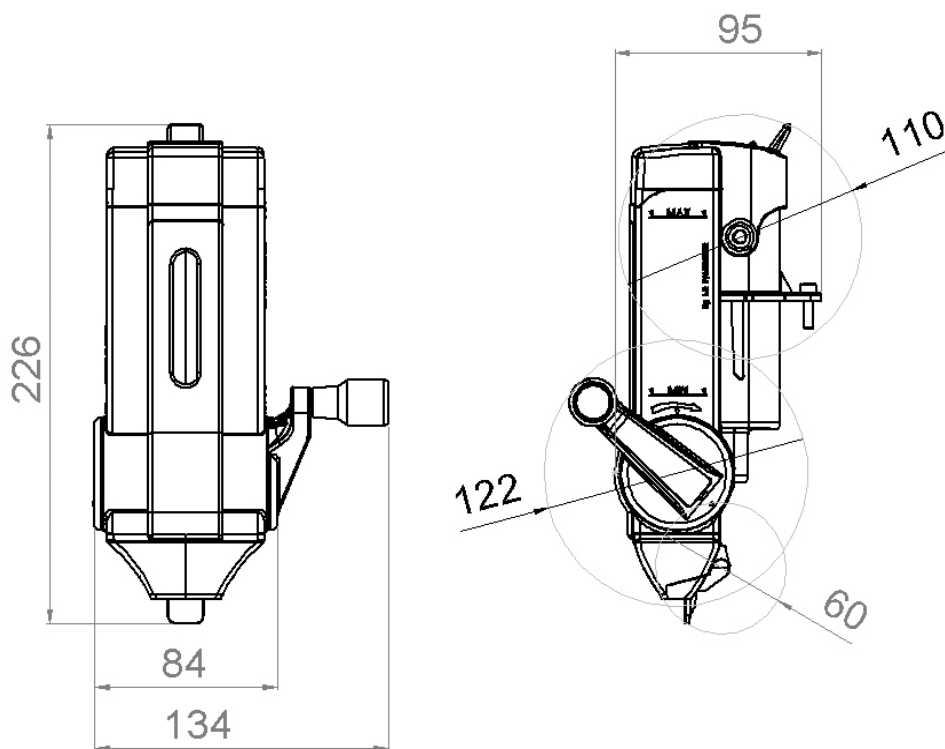


9 - TROUBLESHOOTING

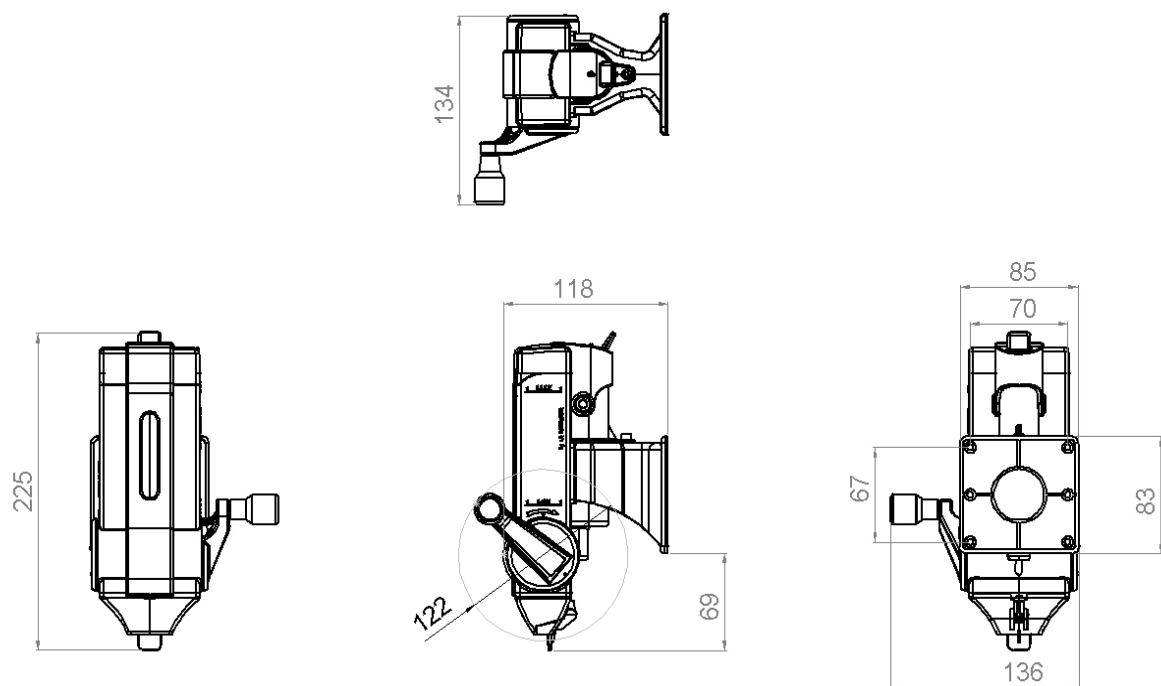
Trouble	Cause	Solution
Few or almost none scrapes when crank.	1- The remaining soap piece reached the MINI level.	Add new soap to the machine.
	2- The soap has not reached the MINI level	Make sure the top of soap is shallow. Otherwise flatten with a sawless knife.
	3 – The nozzle is clogged	Remove the nozzle with a flat and clean tool and clean it and the blades with a brush (chapter 6).
	4- The blades are dirty.	Remove the nozzle with a flat tool and remove the accumulated soap in the blades with a brush (chapter 6)
	5- The handle stops working.	The handle shaft is dirty. Wipe it with clean and dry cloth.
	6- Do not use a soap certified by www.rapeasavon.fr	Buy the soaps on our website.
	7- Cutting height is not adapted to the usual soap.	Increase the amount soap. Chapter 8.1
The scraper often clogs.	8- The scraped is on a wet place	Put it in a dry place.
Drop bits of soap instead of the usual soap chips.	9-Soap composition	From time to time, it is normal to have soap pieces because the soap compositions and the cutting technology used.
	10-Transition between two soaps.	When transition drops some pieces of soap. It is normal and due to the cutting technology used by LA RÂPE À SAVON®

10-DETAILED DIMENSIONS

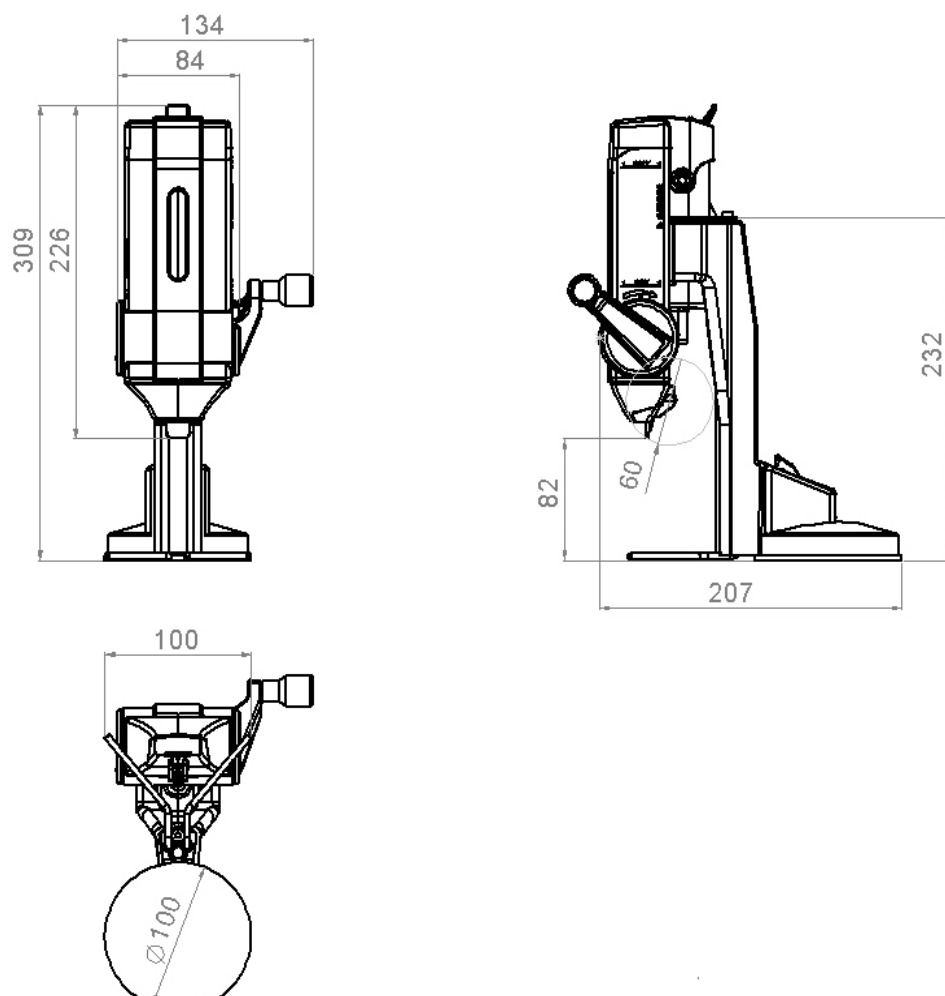
10.1 SOAP GRINDER ONLY



10.2 SOAP GRINDER WITH SUPPORT



10.3 SOAP GRINDER WITH SUCTION CUP



11 - GENERAL

WASTE DISPOSAL



LA RÂPE À SAVON® is a product composed by recyclables material and should be deposited in suitable recycling places.

2 YEARS WARRANTY



Only the soap grinder LA RÂPE À SAVON® machines that use the certified soap sold on our website www.savon21.com and, obviously, our partners' soaps which have been specifically designed for our machines have warranty

Any soap grinder LA RÂPE À SAVON® have a warranty of 2 years, for any manufacturing defects, from the date of buying, by presenting the original invoice.

Our liability under this warranty is limited to replacing defective parts or replacing the soap grinder with the same or equivalent model. No refunds can be claimed.

This soap grinder LA RÂPE À SAVON® warranty does not cover damage caused by misuse, poor maintenance or modifications to the machine.

The buyer must send the soap grinder LA RÂPE À SAVON® together with the original invoice with date of purchase, shipping and return charges to the buyer.

Our company declines any liability in case of use not in accordance with the Instruction Manual and non-compliance with safety rules.
--

PANTHEOR® SAS

268, Boulevard des LUCIOLES
83530 ANTHEOR
FRANCE

Exclusive Authorized Distributor in Portugal :



PANOSSIAN UNIPessoal LDA
Rua Fernandes Tomás N° 58, Loja B
4000-208 PORTO
PORTUGAL

site : www.savon21.com

To contact us : contact@savon21.com

To contact our after sales service: sav@savon21.com ou www.savon21.com

Style : RAS-GP01